

SERVICES & CONSULTANCY

120+

Countries and cities

200+

Employees from
all over the world

30+

Riding Team

20+

Partners

INTRODUCTION

Company Introduction

Smart Marine Concept was found as professional service and consultancy company which leading by experienced and professional team who always happy to provide their wide view and professional efforts to the Clients.

We are company who building family style communication with our clients and happy to serve them at most professional level using our experience and innovative ideas.

GOAL

Our Main goal

is to support ship's owners and managers and insure that time and cost saving well balanced for each project keeping quality level according to high marine standards.

CONSULTANCY

Consultancy and inspections:

1. Technical consultancy including:

- Dry docking recommendation and budget calculation based on performed inspection or provided information;
- Emergency repair consultancy including commercial effect and insurance cases investigation. Joint survey attendance;
- IACS consultancy supported by experienced Class surveyors;
- Marine audit and navigation consultancy by experienced Master Mariners;
- Support to vessel Owners and Shipyards on new building and repair project including site supervision.

2. Physical inspections:

- Dry docking recommendation and budget calculation based on performed inspection or provided information;
- Emergency repair consultancy including commercial effect and insurance cases investigation. Joint survey attendance;
- IACS consultancy supported by experienced Class surveyors;
- Marine audit and navigation consultancy by experienced Master Mariners;
- Support to vessel Owners and Shipyards on new building and repair project including site supervision.

Maintenance and repair

Ship's maintenance from A to Z including following:

1. Mechanical equipment:

- Main and Auxiliary engines repair and major overhauls including 2 and 4 stork. including pneumatic system overhaul / repair. Remote control systems repair / adjustment.
- Boiler repair and inspection including jobs related to Class surveys;
- Auxiliary machinery repair including:
 - Pumps (all types and all media);
 - Fittings - fabrication and repair;
 - Pneumatic system and pressure reservoirs including starting air compressors, auxiliary compressors, fittings and instruments.

2. Hydraulic equipment:

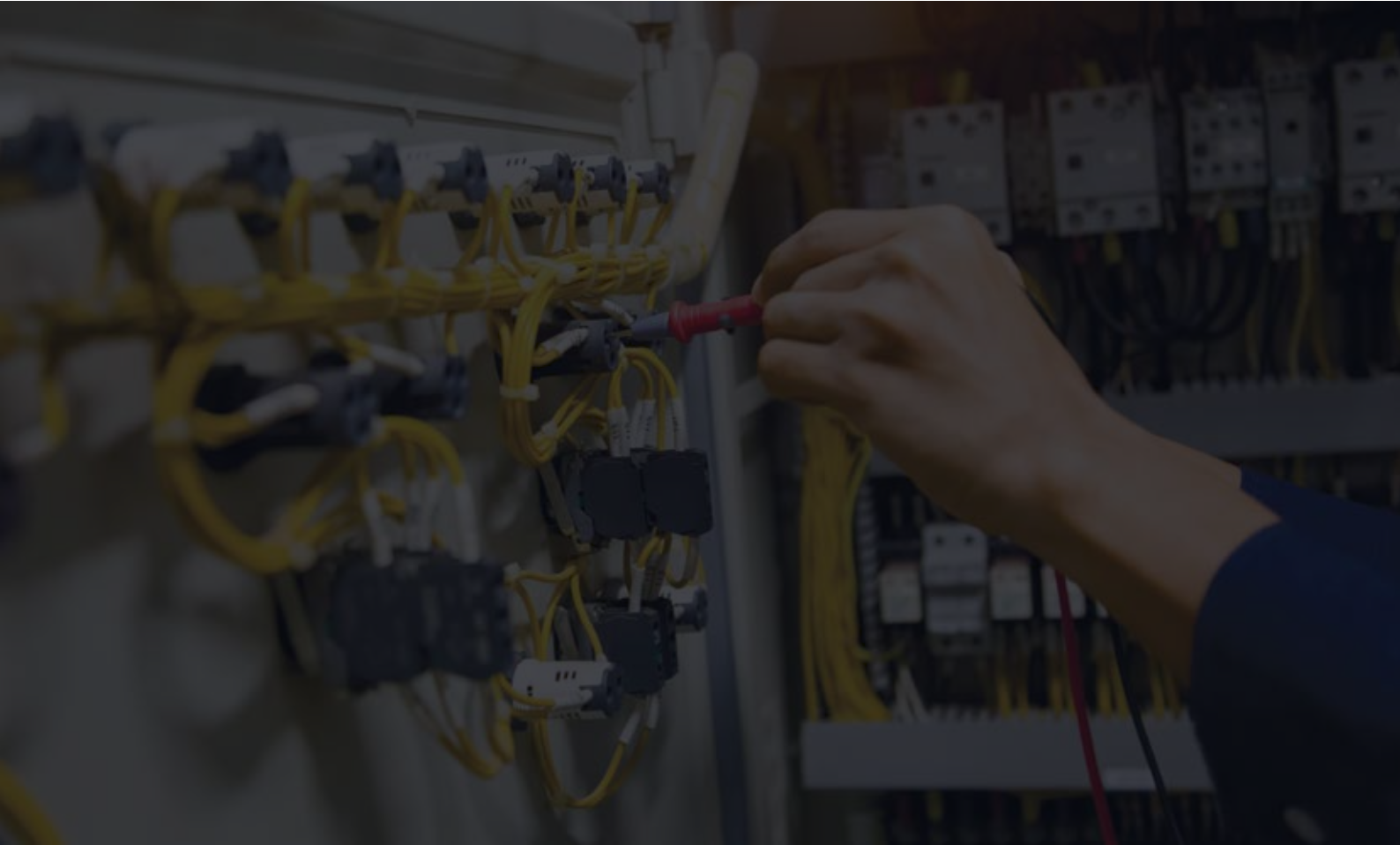
- Cargo cranes and Cargo Grabs repair and adjustment
- Hatch covers and related system repair including overhaul of manipulators and hydraulic cylinders;
- Power packs repair including submerged pumps and monoblocks;
- FRAMO system repair and adjustment including hydraulic and Diesel powered power packs;
- Steering gears adjustment and repair.

3. Upgrades and new installations:

- BWTS including 3-D scannig, design installation and commissioning including steel work and electrical / electronic part;
- Mechanical, and electrical upgrades.

EQUIPMENT

Electrical and Nautical equipment:



- Main and auxiliary machinery control system repairs;
- Remote control system repairs;
- Radio and navigation equipment repair and trouble shooting including radars, ECDIS system installation and commissioning.
- New communication system installation / repair;
- Fire Alarm and Gas detection system inspection and repair;

TANKERS

Tankers related equipment



- Cargo pumps repair including LPG DW pumps;
- Marflex pumps repair including cracked pipe-stuck welding;
- IGG control and s.steel shields repair;
- Steam turbines overhaul;
- ODME reconditioning and calibration;
- PV valves overhaul and testing;
- Steam heaters cleaning and repair;
- FRAMO system overhaul and repair including hydraulic power packs and diesel engines;
- Tank washing machines overhaul;
- LPG compressors overhaul;
- Gas Heat Exchangers cleaning and repair.

CONSTRUCTION

Hull and construction



- Hull welding and repair including ballast tanks, cargo holds, cargo / fuel tanks steel repair done by IACS certified welders;
- WPS (Welding Procedure Specification) prepared by our technical team in accordance with Class requirements and provided;
- Pipe work onboard including SW, FW, Hydraulic and Fuel HP lines repair and manufacturing;
- Deck finings and cargo hold coamings repair;
- Engine Room new equipment installation including various foundation fabrication and related welding works;
- Deck steam lines repair including fittings traps.

NDT & UTM

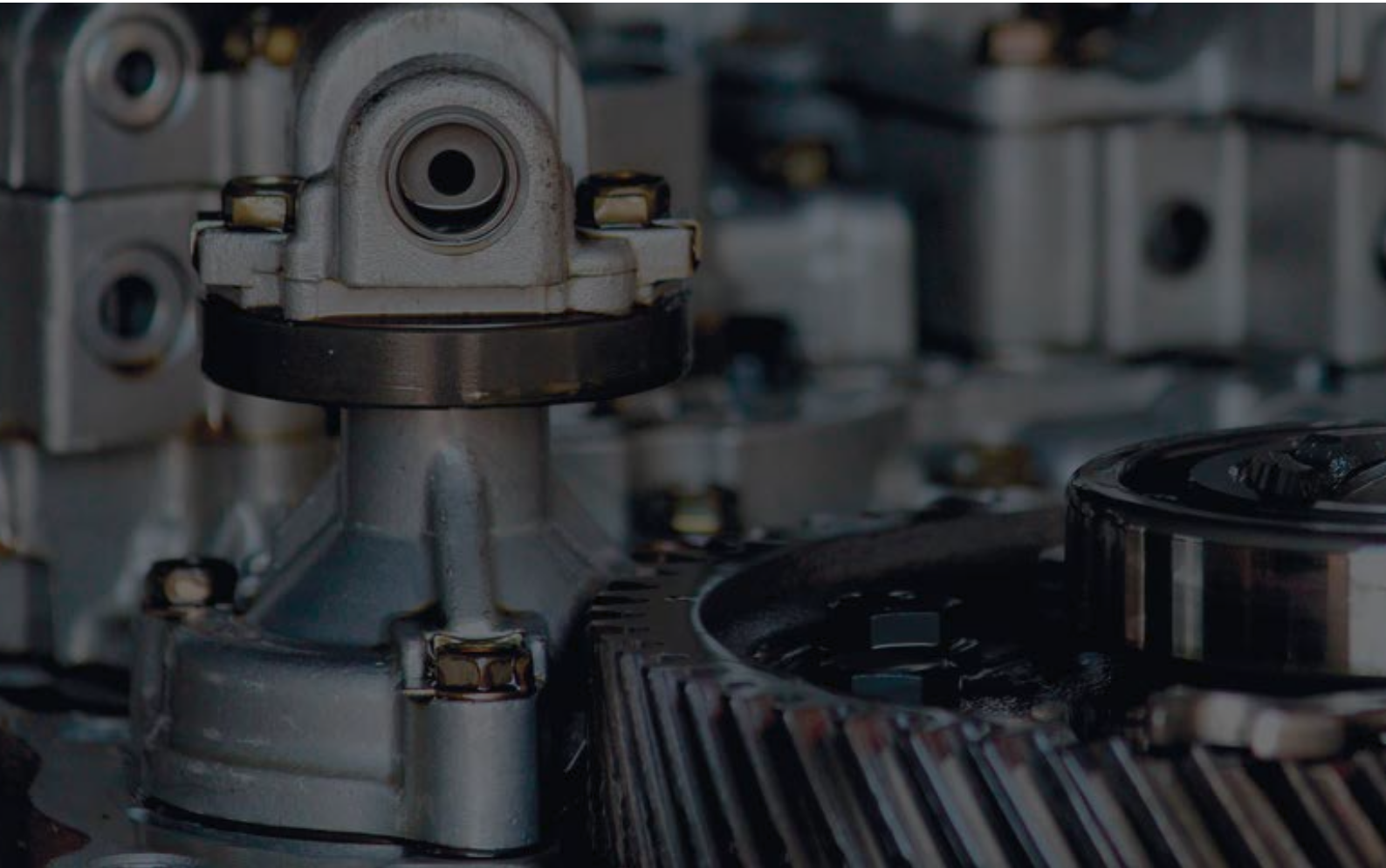
NDT (Non destructive testing) **& UTM** (Ultrasonic Measurements)



- UTM inspection and reports for Class:
- NDT - tests performed by Class certified specialists;
- Steel repair supervision and supports to TSIs during DD or other repairs;
- New Building supervision.

SPARES SUPPLY

Spares and stores World Wide supply



- Stores supply based on IMPA / ISSA, Unitor and other catalogues
- Fire fighting equipment supply;
- Initial supplies for New Buildings;
- Navigation spares;
- Provision supply (China);
- Life saving equipment supply;
- Fabrication / Supply Air coolers and Steam condensers;
- Valves with certificates;
- Engine Spares including OEM quality.

Gas detectors Supply

STORES



- RikenKiKi;
- BW;
- Wilhelmsen
- Drager;
- RAE;
- Supply new;
- Calibration.
- Span Gases supply for calibration equipment.

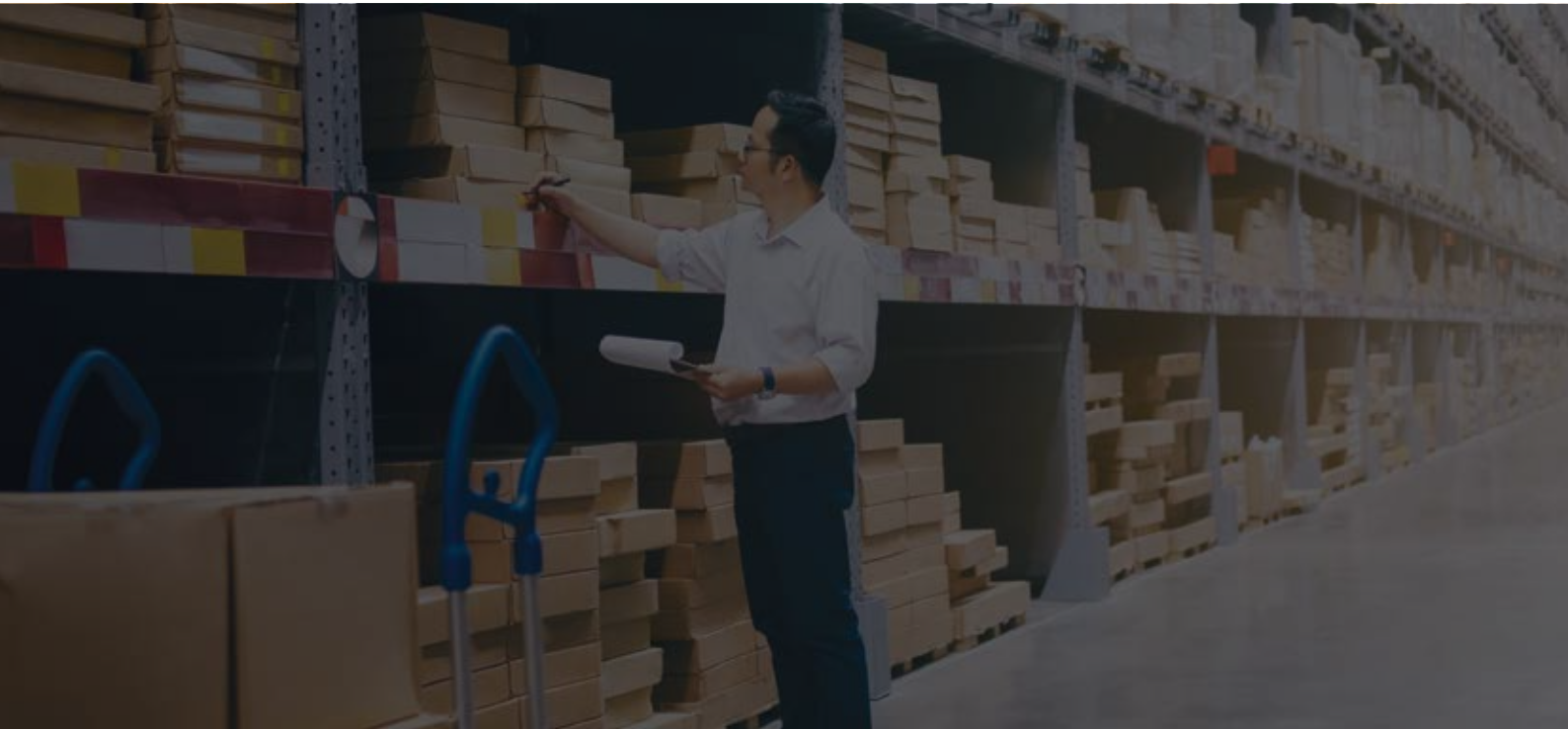
Crewing



- Consulting (Recruitment and Provision of) about highly qualified crew for various types of vessels;
- Crew planning;
- Arrangement of clever and cost efficient crew changes;
- Travel arrangements;
- 24/7 responsiveness and support;
- External / Internal training with respect to clients requirements;
- Support in handling P&I cases;
- Completion of qualified service teams including Mechanical, Electrical, Cleaners and Painters;
- Training for marine officers and rating in engineering and marine aspects.
- Officers consultancy to evaluate level for promotion to next rank;
- MLC /DMLC (draft).

OTHER SERVICES

Other services and supplies on request



- Logistic services including parts and store transfer between World Wide ports and terminals. Logistic services could be arranged between any countries using air and sea freight based on Clients requirements and urgency. Our Logistic team and partners will support you and your fleet 24/7 using their experience and quality.
- Shore based equipment repair including wide specter of port machinery:
 - Container loaders;
 - Electrical and hydraulic cranes;
 - SUL system including belt repair and replacement;
 - Fork lift and Front Loaders repair
- Electrical and electronic equipment, controllers, PCs and related components:
 - Repair / Programing.

Quality and Guaranties



Our office and traveling specialists using their experience to support Clients on according to high marine standards. To insure that quality of performed services are above satisfactory level Smart Marine Concept Ltd performing internal and external trainings to keep our team well trained and sufficiently educated to follow leading technologies and innovations.

Safety aspects are most important and therefore our qualified personnel trained well and introducing safety level and standards onboard, what improving safety level of crew onboard.

As results of any services performed onboard or ashore Smart Marine Concept Ltd providing complete service report with full set of required information including detailed description of findings, measurement protocols, recommendations, and photos. Working onboard our supervisors performing vessel assessment and condition of equipment what could be used by vessel Owners or Managers as good benefit which supporting to avoid unplanned maintenance and breakdowns. Performing any maintenance onboard or ashore our team using their efforts to train crew and equipment operators to improve their qualifications and standards.

On completion of any job our Clients provided with guarantee which covering maintained or repaired equipment for period up to 6 month.

ENGINE MAKERS

List of Engine Makers



- Man B&W including main and generator sets;
- Wärtsila including main and generator sets;
- WinGD including DF engines;
- Mitsubishi Akasaka;
- Pielstik;
- Daihatsu;
- Yanmar;
- Catterpillar;
- Volvo Penta;
- Cummins;
- Lindenberg;
- Polar Nohab.

Our contacts & partners

Main office

– **Email**

info@smartmarine-concept.com
technical@smartmarine-concept.com

– **Phone**

+44 741 845 7731
+38 050 339 3711

– **Address**

Nwms Center, 31 Southampton Row Office
3.11, 3rd floor, London WC1B 5HJ

Main Consultancy and Crewing office

– **Email**

info@smartmarine-concept.com

– **Address**

Lusdorfskaya str. 140a Office 1103
Odessa, 65114 Ukraine

– **Phone**

Consultancy department: +38 050 3393 711
Crewing department: +38 050 3391 408



Lorem ipsum

SMC Smart Marine
Concept Ltd.